

# THE SQUARE LEATHERHEAD



FULLY FITTED  
PLUG AND PLAY  
IDEAL FOR STARTUPS

Q4



CLICK  
HERE TO  
VIEW MORE  
PICTURES

FULLY FITTED FIRST FLOOR OFFICES TOTTALLING **9,216 SQ FT** CAN BE COMBINED WITH THE REMAINDER OF THE FLOOR TO PROVIDE **15,349 SQ FT**

## THE SPECIFICATION INCLUDES

- A stunning grade A headquarter office building overlooking a central amenity square.
- Large efficient floor plate with VRF air conditioning, full access raised floors, metal ceilings and LED lighting.
- Fully fitted comprehensive kitchenette / break out area and separate tea point.
- 14 person board room.
- 25 person training room which can be subdivided.
- 4 x 6 person meeting rooms.
- 3 small meeting rooms.
- Open plan areas with 106 desks and chairs.
- Reception area with visitor seating.
- High quality WCs and shower.
- Low running costs.
- 34 car spaces.
- Cycle parking.

BREEAM  
Very Good / EPC 'A'

A STUNNING NEW BUSINESS ENVIRONMENT DESIGNED TO ENHANCE THE WORKING LIFESTYLE



## SITE PLAN



**The Square** is in an excellent location, a few minutes walk from the **Town Centre and Railway Station**, providing frequent services to **London, Guildford, Wimbledon and Clapham Junction**.



### BY ROAD

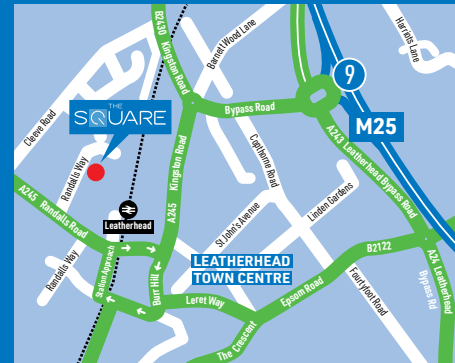
M25, Junction 9	2 miles
Leatherhead Town Centre	1.2 miles
Redhill	12 miles
Croydon	13 miles
London	20 miles
Guildford	16 miles
Gatwick	18 miles
Heathrow	23 miles
Staines	20 miles
Weybridge	10 miles

### BY RAIL

London Waterloo	44 minutes
London Victoria	48 minutes
Clapham Junction	32 minutes
Wimbledon	24 minutes
Epsom	8 minutes
Guildford	26 minutes

### SOURCE:

Road: michelin.com  
Rail: nationalrail.co.uk



### SOME OF THE LOCAL OCCUPIERS:



33 Margaret Street  
London  
W1G 0JD

savills.co.uk



020 7499 8644

Tom Mellows

tmellows@savills.com

Stuart Chambers

stuart.chambers@savills.com

Michael  
Rogers

01737 230700

www.michaelrogers.co.uk

David Smith

david.smith@michaelrogers.co.uk

Chris Bulmer

chris.bulmer@michaelrogers.co.uk

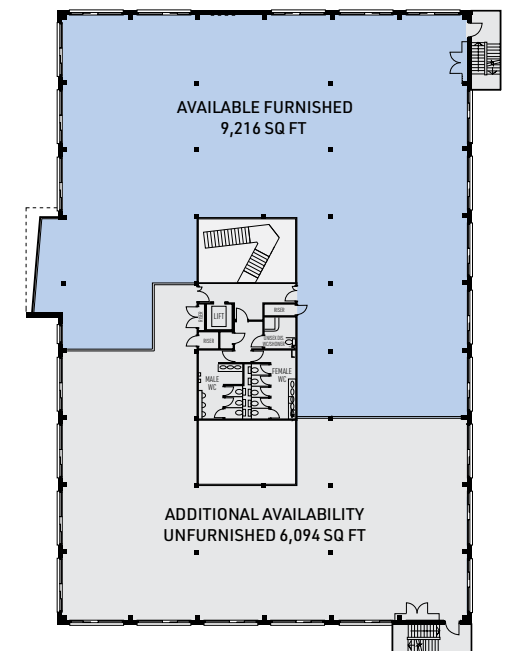
[www.thesquare-leatherhead.com](http://www.thesquare-leatherhead.com)

Misrepresentation act. These details are for general guidance only and are not intended to form an offer or part of an offer. All details are given in good faith and are believed to be correct, but any intending purchasers or tenants should not rely on them as statements or representations of fact, but must satisfy themselves by inspection or otherwise as to their correctness. CGI images and floor plans of the scheme are for identification purposes only. (June 2021)

## FIRST FLOOR

9,216 SQ FT / 856.2 SQ M

15,349 SQ FT / 1426 SQ M



34 PARKING SPACES